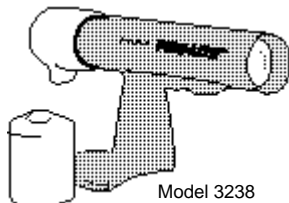


Model 3239



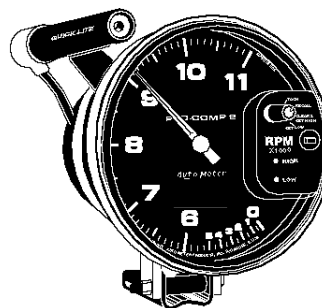
Model 3238

Congratulations on your purchase of the Auto Meter Mini Pro-Lite. This sophisticated sensing unit detects even the slightest changes in pressure or temperature for oil and water. Emitting a high-intensity warning light, the Mini Pro-Lite gives you time to respond before serious engine damage occurs. Please read the following instructions carefully before installing your new Pro-Lite.

Mounting on Auto Meter tachometer

The Mini Pro-Lite may be mounted on the dash, on the steering column, or in other locations for optimum visibility. To mount the Pro-Lite on an Auto Meter Competition tachometer, remove the outer shock strap and loosen the bolt on the inner strap. Insert the base of the Pro-Lite under the inner strap and retighten the bolt. Reassemble the outer shock strap to the base making sure there is clearance around the inner bolt. See illustration at right.

NOTE: Some models do not have the inner shock strap (as shown at far right). To mount the Mini Pro-Lite on one of these models, simply remove the outer shock strap, insert the base of the Mini Pro-Lite under the rubber insulator and reassemble the outer shock strap to the base.



IMPORTANT
 For proper operation of shock mount inner bolt must not touch outer strap or base.



Model Selection

The Pro-Lite requires one of the switches* listed below for proper operation. Select the switch with the appropriate pressure or temperature warning point for your application. Pro-Lite and Light bulb cover Kit information is also given, also termed as "sender" in previous catalogs.

MODEL	ITEM	WARNING POINT
3238	Mini Pro-Lite, Silver <i>Incl. Bulb and Night Covers (Red, Yellow and Blue)</i>	—
3239	Mini Pro-Lite, Black <i>Incl. Bulb and Night Covers (Red, Yellow and Blue)</i>	—
3241	PRESSURE SWITCH	15 psi
3242	PRESSURE SWITCH	30 psi
3243	PRESSURE SWITCH	50 psi
3246	TEMPERATURE SWITCH	200°F
3247	TEMPERATURE SWITCH	220°F
3248	TEMPERATURE SWITCH	275°F

NOTE: SWITCH OPERATES WITHIN A 5% RANGE OF THE NUMBER SHOWN.

Additional Information

Night Racing: The Pro-Lite is designed for high brilliance during daylight racing and may be too bright for night racing. The translucent cover supplied with the Pro-Lite should be used over the lens during night racing to reduce brightness.

Changing Light bulb Cover: To change the Light bulb Cover on the bulb, push the bulb in and twist counterclockwise to remove bulb. Remove old light bulb cover and slip new light bulb cover over bulb. Return bulb with new light bulb cover in socket by pushing in and turning clockwise.

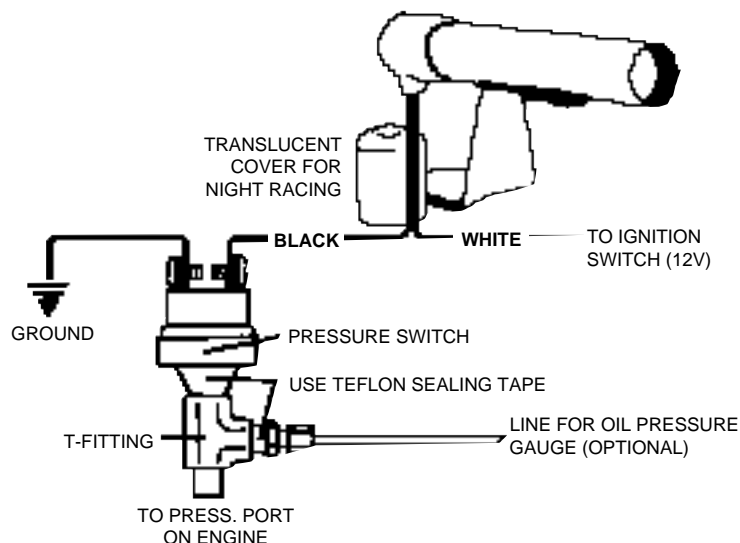
Bulb Replacement: To replace bulb, push the bulb in and twist counterclockwise to remove old bulb. Replace with bulb number 1889 (14 volt/3.8 watt), and insert new bulb by pushing in and turning clockwise.

Installation for Pressure Pro-Lite

1. Thread the Pressure Switch into the Pressure Port on the engine. A T-Fitting should be used if an oil pressure or fuel pressure gauge is used along with the Pro-Lite. (If an oil pressure or fuel pressure gauge is not being used, disregard the T-Fitting and thread the Switch directly into the Pressure Port on the engine.) Use thread sealing compound on switch threads.
2. Connect one wire from the Pro-Lite to the Ignition Switch (12V). Connect the other wire to either terminal on the Switch, as shown in diagram. Connect ground wire from the other Switch terminal to a good engine ground.

NOTE: Do not connect Pro-Lite to a 12 volt circuit that allows it to remain on while engine is off. Light bulb Cover will melt if Pro-Lite is left on for an extended period of time.

3. Recheck installation. The Pro-Lite will come on when the Ignition Switch is turned on. It will go off as pressure increases.

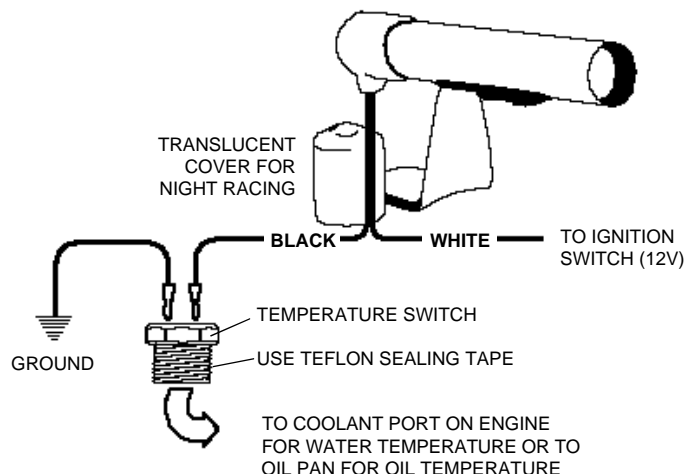


Installation for Temperature Pro-Lite

1. Thread the Temperature Switch into the Coolant Port on the engine for water temperature, or into the Oil Pan for oil temperature. Use thread sealing compound on switch threads.
2. Connect one wire from the Pro-Lite to the Ignition Switch (12V), and the other wire to either terminal on the Switch, as shown in the diagram at right. Connect the ground wire from the other Switch terminal to a good engine ground.

NOTE: Do not connect Pro-Lite to a 12V volt circuit that allows it to remain on while engine is off. Light bulb Cover will melt if Pro-Lite is left on for an extended period of time.

3. Recheck installation. Start the engine and make sure the Temperature Switch does not leak around the threads.



IMPORTANT: Some late model vehicles use electric sensors in their pressure and temperature senders for engine control functions. Before removing the original sender, we recommend that you contact your automotive dealer to be sure no critical functions will be disrupted.

SERVICE

For service send your product to Auto Meter in a well packed shipping carton. Please include a note explaining what the problem is along with your phone number. Please specify when you need the product back. If you need it back immediately mark the outside of the box "RUSH REPAIR," and Auto Meter will service product within two days after receiving it. (\$10.00 charge will be added to the cost of "RUSH REPAIR.") If you are sending product back for Warranty adjustment, you must include a copy (or original) of your sales receipt from the place of purchase.

12 MONTH LIMITED WARRANTY

Auto Meter Products, Inc. warrants to the consumer that all Auto Meter High Performance products will be free from defects in material and workmanship for a period of twelve (12) months from date of the original purchase. Products that fail within this 12 month warranty period will be repaired or replaced at Auto Meter's option to the consumer, when it is determined by Auto Meter Products, Inc. that the product failed due to defects in material or workmanship. This warranty is limited to the repair or replacement of parts in the Auto Meter instruments. In no event shall this warranty exceed the original purchase price of the Auto Meter instruments nor shall Auto Meter Products, Inc. be responsible for special, incidental or consequential damages or costs incurred due to the failure of this product. Warranty claims to Auto Meter must be transportation prepaid and accompanied with dated proof of purchase. This warranty applies only to the original purchaser of product and is non-transferable. All implied warranties shall be limited in duration to the said 12 month warranty period. Breaking the instrument seal, improper use or installation, accident, water damage, abuse, unauthorized repairs or alterations voids this warranty. Auto Meter Products, Inc. disclaims any liability for consequential damages due to breach of any written or implied warranty on all products manufactured by Auto Meter.

FOR SERVICE SEND TO: **AUTO METER PRODUCTS, INC.** 413 W. Elm St., Sycamore, IL 60178 USA (815) 895-8141
Email us at service@autometer.com